



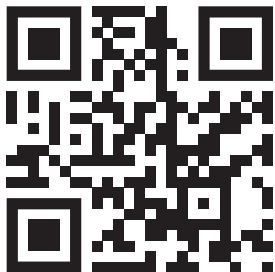
# MHub Essential

Product name: MHub Essential  
Model no.: 02301



WIRELESS ALARM FAMILY

SCAN TO SEE MANUAL



The Cavius and Kidde trademarks, logos, icons and brand name are the sole property of Carrier Fire & Security B.V. and used with their permission.

## Specifications:

### Wireless connectivity:

Setup through Bluetooth LE V4.2

- Unobstructed wireless range in free field, frequency, max transmit power: >10 m, 2400-2483.5 MHz, 9 dBm.

### Internet connection through 2.4 GHz band Wi-Fi (802.11b/g/n):

- Wi-Fi security level: WEP, WPA, WPA2 (personal).
- Unobstructed wireless range in free field, frequency, max transmit power: >100 m, 2400-2495 MHz, 20 dBm.

### Connection to local devices through proprietary 868/869 MHz protocols:

- Unobstructed wireless range in free field, frequency, max transmit power: >300 m, 868.65 and 869.675 MHz, 14 dBm.

Dimensions: 64 mm x 64 mm x 38 mm.

Operating environment: -20°C to +45°C, 10 to 90%RH (non-condensing).

Power supply: 5 VDC, 1 A, USB-C type connector.

In accordance with CE-RED directive, RoHS and REACH regulations.

Hereby, LiviSense declares that the radio equipment model 02301 is in compliance with Directive 2014/53/EU.

The full text of the EU declaration of conformity is available at the following internet address: [www.livisense.com](http://www.livisense.com)

LiviSense assumes no responsibility for any errors, which may appear in this manual. Furthermore, LiviSense reserves the right to alter the hardware, software, and/or specifications detailed herein at any time without notice, and LiviSense does not make any commitment to update the information contained herein.

Manufacturer: LiviSense ApS, Viengevej 100, Risskov, DK-8240.

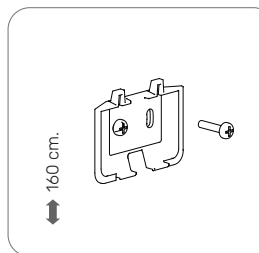
Manufactured in P.R.C.

Authorized distributor: BSP AS, Po.box. 596, N1411 Kolbotn, Norway.

Waste: Electrical products should not be disposed of with household waste. Please recycle where facilities exist. Check with local authority or supplier for recycling advice.

**CAUTION!** Indoor use only. Do not submerge the device in liquid or attempt to clean it with liquids or solvents. To clean the device, disconnect from the power outlet. Keep the device away from water, fire, humidity or hot environments. Do not attempt to disassemble, repair or modify the device. Never use the product if it is defective. Continuing to use a defective product can cause serious injury.

©2024 LiviSense All Rights Reserved. All trademarks and service marks referred herein are property of their respective owners.

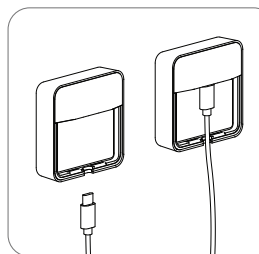


Mount the MHub Essential in a central location. For best coverage, we recommend mounting the MHub 160 cm from the floor.

Ensure you have a nearby power outlet.

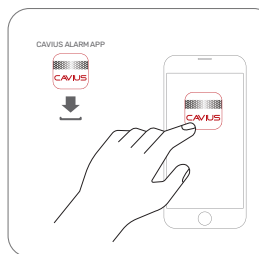
Ensure a distance of at least 50 cm to other electronic devices.

Use either the double sided tape or screws and plugs (5 mm drill, 25-30 mm deep) to secure the wall bracket.



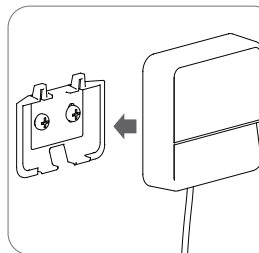
Connect the USB-C cable to the backside of the MHub Essential.

Power up the MHub Essential by connecting the other end of the USB cable to the power supply and plug the powersupply into the power outlet.



Download and install the Cavius Alarm App from App Store or Google Play on your smartphone and/or tablet.

Start the Cavius Alarm App and follow the instructions in the App.



"Click" the MHub Essential in place into the bracket with the USB cable facing down.